

Sinclair  Hammelton

ASKING PRICE

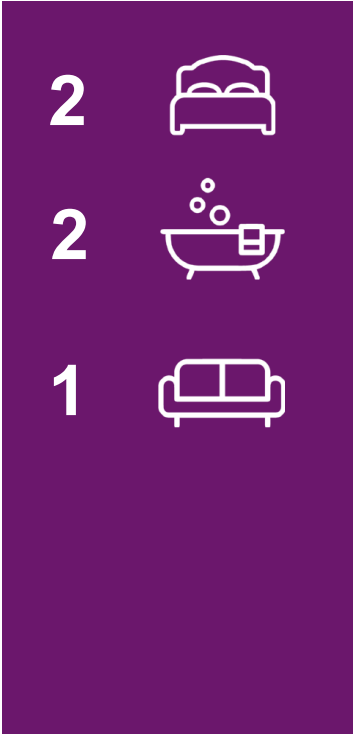
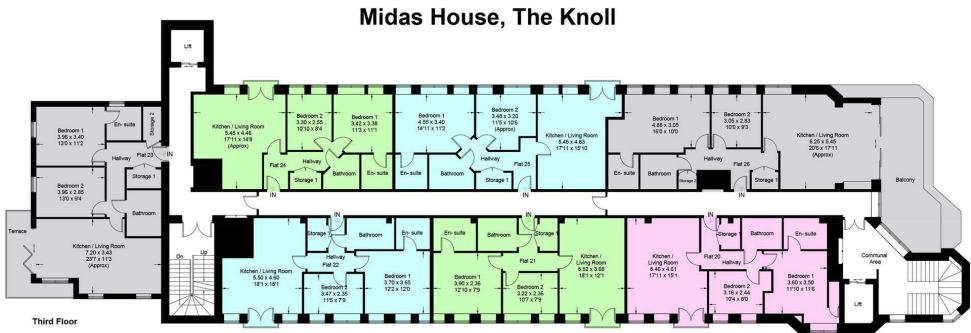
£400,000

Knoll Rise

Orpington, BR6 0FN



EPC RATING: C COUNCIL TAX BAND: D



Energy Efficiency Rating		Current	Potential
Very energy efficient - lower running costs			
(92 plus) A			
(81-91) B			
(69-80) C			
(55-68) D		71	71
(39-54) E			
(21-38) F			
(1-20) G			
Not energy efficient - higher running costs			
England & Wales		EU Directive 2002/91/EC	



Agents Note: Whilst every care has been taken to prepare these particulars, they are for guidance purposes only. All measurements are approximate and are for general guidance purposes only and whilst every care has been taken to ensure their accuracy, they should not be relied upon and potential buyers/tenants are advised to recheck the measurements



OFFICE ADDRESS
1 Chatsworth Parade
Kent
BR5 1EF

OFFICE DETAILS
01689 806 770
infopw@sinclairhammelton.co.uk